



Generation Four (GEN4)

Instructions for Upgrading

V 1.0.5 March 10, 2009

E-mail Support: Support@AutumnTECH.com

Telephone Support: 1+301-498-7654 x 11

Disclaimer and License Agreement

END-USER LICENSE AGREEMENT FOR AUTUMNTECH SOFTWARE

IMPORTANT-READ CAREFULLY: This AUTUMNTECH End-User License Agreement ("EULA") is a legal agreement between you (either an individual or a single entity) and AUTUMNTECH LLC for the AUTUMNTECH software product identified above, which includes computer software and associated media and printed materials, and may include "online" or electronic documentation ("SOFTWARE PRODUCT" or "SOFTWARE"). By installing, copying, or otherwise using the SOFTWARE PRODUCT, you agree to be bound by the terms of this EULA. If you do not agree to the terms of this EULA; promptly return the unused SOFTWARE PRODUCT to the place from which you obtained it for a full refund; or if you received the SOFTWARE PRODUCT as part of a subscription or other service from AUTUMNTECH, you may cancel the subscription and receive a pro rata portion of the subscription price.

SOFTWARE PRODUCT LICENSE

The SOFTWARE PRODUCT is protected by copyright laws and international copyright treaties, as well as other intellectual property laws and treaties. The SOFTWARE PRODUCT is licensed, not sold.

1. GRANT OF LICENSE. This EULA grants you the following limited, non-exclusive rights: Software Product. You may install and use one running instance of the SOFTWARE PRODUCT on one computer. Each concurrent instance of SOFTWARE PRODUCT requires a separate license available for purchase at <http://www.Autumntech.com>. You may not copy the SOFTWARE PRODUCT. You may redistribute the SOFTWARE PRODUCT if you are an Authorized AutumnTECH Reseller and the reseller contract is valid and in full compliance at the time of the distribution.

2. COPYRIGHT. All rights, title, and copyrights in and to the SOFTWARE PRODUCT (including, but not limited to, any images, photographs, animations, video, audio, music, text, and "applets" incorporated into the SOFTWARE PRODUCT) and any copies of the SOFTWARE PRODUCT are owned by AUTUMNTECH or its suppliers. The SOFTWARE PRODUCT is protected by copyright laws and international treaty provisions. Therefore, you must treat the SOFTWARE PRODUCT like any other copyrighted material, except that you may either (a) make one copy of the SOFTWARE PRODUCT solely for backup or archival purposes or (b) install the SOFTWARE PRODUCT on a single computer, provided you keep the original solely for backup or archival purposes. You may not copy the printed materials accompanying the SOFTWARE PRODUCT.

3. PRERELEASE CODE. The SOFTWARE PRODUCT may contain PRERELEASE CODE that is not at the level of performance and compatibility of the final, generally available, product offering. These portions of the SOFTWARE PRODUCT may not operate correctly and may be substantially modified prior to first commercial shipment. AUTUMNTECH is not obligated to make this or any later version of the SOFTWARE PRODUCT commercially available.

4. DESCRIPTION OF OTHER RIGHTS AND LIMITATIONS.

Limitations on Reverse-Engineering, Decompilation, and Disassembly. You may not reverse-engineer, decompile, or disassemble the SOFTWARE PRODUCT, except and only to the extent that such activity is expressly permitted by applicable law notwithstanding this limitation.

Rental. You may not rent or lease the SOFTWARE PRODUCT.

Software Transfer. You may not transfer any right under this EULA unless you are an Authorized AutumnTECH Reseller and the reseller contract is valid and in full compliance at the time of the transfer.

Termination. Without prejudice to any other rights, AUTUMNTECH may terminate this EULA if you fail to comply with the terms and conditions of this EULA. In such event, you must destroy all copies of the SOFTWARE PRODUCT and all of its component parts.

5. EXPORT RESTRICTIONS. You agree that neither you nor your customers intend to or will, directly or indirectly, export or transmit (a) the SOFTWARE PRODUCT or related documentation and technical data, or (b) your Application as described in Section 1 of this EULA (or any part thereof), or process, or service that is the direct product of the SOFTWARE PRODUCT to any country to which such export or transmission is restricted by any applicable U.S. regulation or statute, without the prior written consent, if required, of the Bureau of Export Administration of the U.S. Department of Commerce, or such other governmental entity as may have jurisdiction over such export or transmission.

6. U.S. GOVERNMENT RESTRICTED RIGHTS. The SOFTWARE PRODUCT and documentation are provided with RESTRICTED RIGHTS. Use, duplication, or disclosure by the Government is subject to restrictions as set forth in subparagraph (c)(1)(ii) of The Rights in Technical Data and Computer Software clause at DFARS 252.227-7013 or subparagraphs (c)(1) and (2) of the Commercial Computer Software - Restricted Rights at 48 CFR 52.227-19, as applicable. Manufacturer is AUTUMNTECH™ LLC

7. AUTUMNTECH appliances are distributed with GPL licensed software. To request copies of the current GPL source code, send a e-mail request to Support@Autumntech.com. AUTUMNTECH makes no claim of ownership for included GPL licensed software which is excluded from copyright notices posted for SOFTWARE PRODUCT. You are free to distribute GPL licensed software in accordance with the licensing terms found at <http://www.gnu.org/licenses/licenses.html>

MISCELLANEOUS

This EULA is governed by the laws of the State of Maryland.

Should you have any questions concerning this EULA, or if you desire to contact AUTUMNTECH for any reason? Please contact the AUTUMNTECH subsidiary serving your country, or e-mail Support@Autumntech.com

NO WARRANTIES. To the maximum extent permitted by applicable law, AUTUMNTECH expressly disclaims any warranty for the SOFTWARE PRODUCT. The SOFTWARE PRODUCT and any related documentation are provided "as is" without warranty of any kind, either express or implied, including, without limitation, the implied warranties of merchantability or fitness for a particular purpose. The entire risk arising out of use or performance of the SOFTWARE PRODUCT remains with you.

LIMITATION OF LIABILITY. AUTUMNTECH's entire liability and your exclusive remedy under this EULA shall not exceed five dollars (US\$5.00).

NO LIABILITY FOR CONSEQUENTIAL DAMAGES. To the maximum extent permitted by applicable law, in no event shall AUTUMNTECH or its suppliers be liable for any damages whatsoever (including, without limitation, damages for loss of business profit, business interruption, loss of business information, or any other pecuniary loss) arising out of the use of, or inability to use, this AUTUMNTECH product, even if AUTUMNTECH has been advised of the possibility of such damages. Because some states/jurisdictions do not allow the exclusion or limitation of liability for consequential or incidental damages, the above limitation may not apply to you.

Before You Begin

The process for upgrading your AutumnTECH solution to GEN4 has been simplified by AutumnTECH developers in an effort to allow for the quickest upgrade path while preserving your existing settings and configuration.

Generation One (GEN1) and Generation Two (GEN2) operators will lose several databases during the GEN4 upgrade including the anti-spam Bayesian training files. These files are not compatible in the GEN4 environment. In addition, GEN1 and GEN2 per-user quarantine accounts will be lost and all access passwords will be set to factory default. Not to worry though, GEN4 includes an improved and all ready trained anti-spam Bayesian training database, so, not all will be lost during the upgrade. Generation Three (GEN3) operators enjoy the benefit that the majority of their settings and configuration files will transfer transparently into the GEN4 environment.

What You Need to Get Started

The upgrade process will take sixty minutes (normally) to complete. You will need to establish a remote SSH session to your appliance using an SSH client like “Putty” and a secure file transfer client like “SCP” In addition, you need to attach a monitor and keyboard to the appropriate ports located in the rear of your appliance.

Attach a monitor and PS/2 style keyboard to the rear of the appliance now!

We recommend blocking incoming e-mail traffic which arrives on TCP port 25 (SMTP) within your firewall. This will prevent a partially upgraded appliance from having to manage and deliver e-mail during the upgrade. E-mail should only be directed at the appliance after the appliance has been fully upgraded.

You will need all username and passwords used for accessing your appliance. Here are the factory default credentials:

SSH/Console (superuser) username:	root
SSH/Console (superuser) password:	password
SSH/Console (operator) username:	spam
SSH/Console (operator) password:	password
Webtility web access username:	admin
Webtility web access password:	password

If you need an SSH and secure file transfer client (SCP), we have both available for download off of our website. These clients are compiled for the Windows® operating system. Both should be downloaded and saved in the “System32” directory which will normally be located at C:\WINDOWS\System32

Putty SSH Client: <ftp://ftp.Autumntech.com/putty.exe>

Putty SCP Client: <ftp://ftp.Autumntech.com/pscp.exe>

Upgrade Step 1: Download and Run “gen4step1.sh”

Log into your appliance via SSH (Putty is available above) as “root” (no quotes), hit enter until you reach a “#” (no quotes) prompt. Run the following commands (case sensitive):

```
cd /
```

```
wget ftp://ftp.Autumntech.com/gen4step1.sh -O /gen4step1.sh
```

(note in the above command that -O is a O like in Open)

```
/bin/sh gen4step1.sh
```

```
Last login: Thu Jan 23 11:27:43 2009 from tboyer@ec.autumntech.local
OpenSSH 4.1-current (GENERIC) #1871 Mon May 26 14:22:11 PDT 2003
Welcome to your Generation Three (GEN3) AutumnTECH Anti-Spam Anti-Virus Appliance. Access is prohibited and offered only to authorized individuals
Terminal type? [vt100]

#
#
# cd /
# wget ftp://ftp.Autumntech.com/gen4step1.sh
--11:53:41--  ftp://ftp.autumntech.com/gen4step1.sh
           => "gen4step1.sh,2"
Resolving ftp.autumntech.com... 192.168.200.7
Connecting to ftp.autumntech.com [192.168.200.7]:21... connected.
Logging in as anonymous... Logged in!
==> SYST ... done.      ==> PWD ... done.
==> TYPE I ... done.   ==> CWD not needed.
==> PASV ... done.    ==> RETR gen4step1.sh ... done.

[ <=> ] 3.310      ==.-=K/a
11:53:41 (95.92 MB/s) - "gen4step1.sh,2" saved [3319]
# /bin/sh gen4step1.sh
```

Follow the instructions shown on your screen. The script will generate a backup file called “gen4backup.tgz” This file will need to be securely copied off of the appliance and onto a Windows® workstation that has the pscp.exe utility saved onto it.

On that Windows® workstation, open a command prompt (Start > Run > cmd) If you saved pscp.exe in the C:\Windows\System32 directory, you simply type the following to transfer the file (case sensitive):

```
pscp root@iphere:/gen4backup.tgz .
```

**** NOTE **** Change "iphere" in the above command to the actual IP address assigned to the AutumnTECH appliance.

```
C:\Documents and Settings\TBoyer>pscp root@192.168.200.100:/gen4backup.tgz .
The server's host key is not cached in the registry. You
have no guarantee that the server is the computer you
think it is.
The server's key fingerprint is:
ssh-rsa 2048 46:b2:2f:e3:76:8f:a9:f3:2c:fc:e8:cc:68:e7:a5:33
If you trust this host, enter "y" to add the key to
PuTTY's cache and carry on connecting.
If you want to carry on connecting just once, without
adding the key to the cache, enter "n".
If you do not trust this host, press Return to abandon the
connection.
Store key in cache? (y/n) y
root@192.168.200.100's password:
gen4backup.tgz | 196 kB | 19.6 kB/s | ETA: 00:03:24 | 4%
```

This file will be used to recover the prior version's settings and configuration files onto your new GEN4 appliance. Care and caution should be taken with the handling of this backup file.

```
*****
* Welcome to the Generation Four (GEN4) upgrade Wizard *
*****
This procedure will backup your current GEN3 configuration for recover after GEN4 has been installed.
We highly recommend that you stop e-mail traffic from arriving by disabling your firewall rule that
allows TCP port 25 (SMTP) from passing through and into this system.

Hit Enter to continue, Ctrl-C to exit
I'm now creating a backup of this system...please wait
postfix/postfix-script: stopping the Postfix mail system
Stopping mail statistics grapher: mailgraph
preparing to run an aggressive backup...please wait
preparing to tarball the /home partition...please wait
tarballing: /home/spam/.spamassassin /home/spam/Maildir /home/spam/.Backup /home/spam/.Virus /home/spam/trapped /home/spam/
one/spam/.getmail /home/tboyer /home/supportsales
tar: Removing leading / from absolute path names in the archive
tar: Removing leading / from absolute path names in the archive
tar: Unable to access /usr/local/www/data/snort/webtality.log: No such file or directory
tar: Unable to access /home/spam/Maildir/sa-learn-ham.log: No such file or directory
tar: Unable to access /home/spam/Maildir/sa-learn-spam.log: No such file or directory
tar: Unable to access /home/spam/Maildir/sa-learn-sync.log: No such file or directory
tar: WARNING! These file names were not selected:
/usr/local/www/data/snort/webtality.log
/home/spam/Maildir/sa-learn-ham.log
/home/spam/Maildir/sa-learn-spam.log
/home/spam/Maildir/sa-learn-sync.log
downloading GEN4 setup file bsd.rd, which will replace bsd...please wait
***

The backup process of your GEN3 appliance has completed. You should now use the secure file transfer client
(SCP) to copy the gen4backup.tgz file from this appliance to your local Windows(R) workstation. This is accomplished
by downloading the pscp.exe client to your Windows(R) workstation. pscp.exe is available for download at:
ftp://ftp.AutumnTECH.com/pscp.exe

On your Windows(R) workstation, open a command prompt (Start > Run > cmd) If you saved pscp.exe in the C:\Windows\System32
directory, you simply type the following to transfer the file (case sensitive):

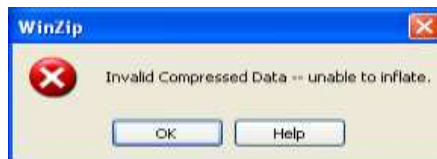
pscp root@iphere1:gen4backup.tgz .

** NOTE ** Change "iphere" in the above command to the actual IP address assigned to the AutumnTECH appliance.

After gen4backup.tgz has been transferred, reboot the appliance by typing "reboot" (no quotes) at the # command prompt
# reboot█
```

**** DO NOT REBOOT UNTIL THE gen4backup.tgz FILE HAS BEEN CONFIRMED ****

- Using a utility like 7-zip (www.7-Zip.org), open the gen4backup.tgz file on the Windows® workstation it was copied to. **IF** the file fails to open or an error is displayed, then the gen4backup.tgz backup file did not transfer correctly! If this occurs, return to the AutumnTECH appliance and type this command (case sensitive): **cp /bsd.old /bsd**



- If you had to recover bsd in the previous step, try to run the setup again **/bin/sh /gen4step1.sh**

**** DO NOT REBOOT UNTIL THE gen4backup.tgz FILE HAS BEEN CONFIRMED ****

Type **"reboot"** (no quotes) to restart the appliance into the installation mode which is explained in the next step.

**** IMPORTANT **** the next install step requires that you have a monitor and PS/2 type keyboard attached to the rear of the appliance. If you have not done so yet, you should locate and attach now.

Upgrade Step 2: Installing GEN4

Rebooting the appliance will drop the system into the default “OpenBSD” install manager. OpenBSD is the Unix-like operating system that the AutumnTECH solutions operate on top of. Areas within the setup that require input are highlighted in **RED** if no input is required but a question is being asked, simply hit the “Enter” keyboard key to continue.

(I)nstall, (U)pgrade or (S)hell? **I**

- **IF after rebooting** you find that you must cancel the GEN4 installation and restart GEN3, hit the **S** keyboard key (instead of **I**) when prompted at the above install prompt. This will drop the GEN4 installation into the shell prompt. At the shell (#) prompt type the following commands (case sensitive):

```
mount -rw /dev/wd0a /mnt
```

```
cp /mnt/bsd.old /mnt/bsd
```

```
reboot
```

**** Use the S (shell) and the above commands are ONLY Used IF you need to cancel the GEN4 installation and recover your GEN3 installation. The GEN3 kernel will be recovered allowing you to recover your appliance and boot back into GEN3 ****

Welcome to the OpenBSD/i386 4.4 install program.

This program will help you install OpenBSD. At any prompt except password prompts you can escape to a shell by typing '!'. Default answers are shown in []'s and are selected by pressing RETURN. At any time you can exit this program by pressing Control-C, but exiting during an install can leave your system in an inconsistent state.

Terminal type? [vt220]

kbd(8) mapping? ('L' for list) [none]

IS YOUR DATA BACKED UP? As with anything that modifies disk contents, this program can cause SIGNIFICANT data loss. It is often helpful to have the installation notes handy. For complex disk configurations, relevant disk hardware manuals and a calculator are useful.

Proceed with install? [no] **yes**

Cool! Let's get to it. You will now initialize the disk(s) that OpenBSD will use. To enable all available security features you should configure the disk(s) to allow the creation of separate filesystems for /, /tmp, /var, /usr, and /home.

Available disks are: wd0.

Which one is the root disk? (or 'done') [wd0]

Do you want to use *all* of wd0 for OpenBSD? [no] **yes**

Putting all of wd0 into an active OpenBSD MBR partition (type 'A6')...done.

You will now create an OpenBSD disklabel inside the OpenBSD MBR partition. The disklabel defines how OpenBSD splits up the MBR partition into OpenBSD partitions in which filesystems and swap space are created. The offsets used in the disklabel are ABSOLUTE, i.e. relative to the start of the disk, NOT the start of the OpenBSD MBR partition.

```
# Inside MBR partition 3: type A6 start 63 size 234436482
Treating sectors 63-8796117144656 as the OpenBSD portion of the disk.
You can use the 'b' command to change this.
Initial label editor (enter '?' for help at any prompt)
> d *
> a a
offset: [63]
size: [8796117144593] 5G
Rounding to cylinder: 10486161
FS type: [4.2BSD]
mount point: [none] /
> a b
offset: [10486224]
size: [8796106658432] 1.5G
Rounding to cylinder: 3145968
FS type: [swap]
> a d
offset: [13632192]
size: [8796103512464] 1G
Rounding to cylinder: 2097648
FS type: [4.2BSD]
mount point: [none] /tmp
> a e
offset: [15729840]
size: [8796101414816] 5G
Rounding to cylinder: 10486224
FS type: [4.2BSD]
mount point: [none] /usr
> a f
offset: [26216064]
size: [8796090928592] 5G
Rounding to cylinder: 10486224
FS type: [4.2BSD]
mount point: [none] /var
> a h
offset: [36702288]
size: [8796080442368] 5G
Rounding to cylinder: 10486224
FS type: [4.2BSD]
mount point: [none] /home
> a i
offset: [47188512]
```

size: [8796069956144] **5G**
Rounding to cylinder: 10486224
FS type: [4.2BSD]
mount point: [none] **/hold**

> **w**
> **q**

No label changes.

Mount point for wd0d (1024 MBytes)? (or 'none' or 'done') [/tmp]
Mount point for wd0e (5120 MBytes)? (or 'none' or 'done') [/usr]
Mount point for wd0f (5120 MBytes)? (or 'none' or 'done') [/var]
Mount point for wd0h (5120 MBytes)? (or 'none' or 'done') [/home]
Mount point for wd0i (5120 MBytes)? (or 'none' or 'done') [/hold]
Mount point for wd0d (1024 MBytes)? (or 'none' or 'done') [/tmp] **done**
No more disks to initialize.

OpenBSD filesystems:

wd0a /
wd0d /tmp
wd0e /usr
wd0f /var
wd0h /home
wd0i /hold

The next step ***DESTROYS*** all existing data on these partitions! Are you really sure that you're ready to proceed? [no] **yes**

/dev/rwd0a: 5120.2MB in 10486160 sectors of 512 bytes
26 cylinder groups of 202.47MB, 12958 blocks, 25984 inodes each
/dev/rwd0d: 1024.2MB in 2097648 sectors of 512 bytes
6 cylinder groups of 202.47MB, 12958 blocks, 25984 inodes each
/dev/rwd0e: 5120.2MB in 10486224 sectors of 512 bytes
26 cylinder groups of 202.47MB, 12958 blocks, 25984 inodes each
/dev/rwd0f: 5120.2MB in 10486224 sectors of 512 bytes
26 cylinder groups of 202.47MB, 12958 blocks, 25984 inodes each
/dev/rwd0h: 5120.2MB in 10486224 sectors of 512 bytes
26 cylinder groups of 202.47MB, 12958 blocks, 25984 inodes each
/dev/rwd0i: 5120.2MB in 10486224 sectors of 512 bytes
26 cylinder groups of 202.47MB, 12958 blocks, 25984 inodes each
/dev/wd0a on /mnt type ffs (rw, asynchronous, local, ctime=Thu Jan 29 17:54:37 2009)
/dev/wd0i on /mnt/hold type ffs (rw, asynchronous, local, nodev, nosuid, ctime=Thu Jan 29 17:54:37 2009)
/dev/wd0h on /mnt/home type ffs (rw, asynchronous, local, nodev, nosuid, ctime=Thu Jan 29 17:54:37 2009)
/dev/wd0d on /mnt/tmp type ffs (rw, asynchronous, local, nodev, nosuid, ctime=Thu Jan 29 17:54:37 2009)
/dev/wd0e on /mnt/usr type ffs (rw, asynchronous, local, nodev, ctime=Thu Jan 29 17:54:37 2009)
/dev/wd0f on /mnt/var type ffs (rw, asynchronous, local, nodev, nosuid, ctime=Thu Jan 29 17:54:37 2009)

System hostname? (short form, e.g. 'foo') **(name your appliance here i.e. mail or mailer)**

Configure the network? [yes]

Available interfaces are: em0 em1. **←These interfaces may be different in your setup**

Which one do you wish to initialize? (or 'done') [em0]

Symbolic (host) name for em0? [noname]

The media options for em0 are currently

media: Ethernet autoselect (100baseTX full-duplex,rxpause,txpause)

Do you want to change the media options? [no]

IPv4 address for em0? (or 'none' or 'dhcp') [dhcp] **(the IP address of the appliance goes here, no DHCP!)**

Netmask? [255.255.255.0] **(the subnet mask for your network goes here i.e. 255.255.255.0)**

IPv6 address for em0? (or 'rtsol' or 'none') [none]

Available interfaces are: em1.

Which one do you wish to initialize? (or 'done') [em1] **←You may not have a 2nd interface in your setup**

Symbolic (host) name for em1? [noname]

The media options for em1 are currently

media: Ethernet autoselect (none)

Do you want to change the media options? [no]

IPv4 address for em1? (or 'none' or 'dhcp') [dhcp] **192.168.100.1**

Netmask? [255.255.255.0] **255.255.255.255**

IPv6 address for em1? (or 'rtsol' or 'none') [none]

No more interfaces to initialize.

DNS domain name? (e.g. 'bar.com') [my.domain] **(your domain name goes here i.e. yourname.com)**

DNS nameserver? (IP address or 'none') [none] **(your network DNS server IP address goes here)**

Use the nameserver now? [yes]

Default IPv4 route? (IPv4 address, 'dhcp' or 'none') **(your network default gateway goes here)**

add net default: gateway ...

Edit hosts with ed? [no]

Do you want to do any manual network configuration? [no]

Password for root account? (will not echo) **password**

Password for root account? (again) **password**

Let's install the sets!

Location of sets? (disk ftp http or 'done') [disk] **f**

HTTP/FTP proxy URL? (e.g. 'http://proxy:8080', or 'none') [none]

Display the list of known ftp servers? [no]

Server? (IP address, hostname or 'done') **autumntech.fileburst.com**

Use active mode ftp? [no]

Server directory? [pub/OpenBSD/4.4/i386]

Login? [anonymous] **(was provided to you by AutumnTECH support in order confirmation e-mail)**

Password? (will not echo) **(was provided to you by AutumnTECH support in order confirmation e-mail)**

Select sets by entering a set name, a file name pattern or 'all'. De-select sets by prepending a '-' to the set name, file name pattern or 'all'. Selected sets are labelled '[X]'.

[X] bsd

[X] base44.tgz

[X] etc44.tgz

[] xbase44.tgz

[] xshare44.tgz

[] site44.tgz

Set name? (or 'done') [xbase44.tgz] **all**

[X] bsd

```
[X] base44.tgz
[X] etc44.tgz
[X] xbase44.tgz
[X] xshare44.tgz
[X] site44.tgz
Set name? (or 'done') [done] done
Ready to install sets? [yes]
Getting bsd ...
Getting base44.tgz ...
Getting etc44.tgz ...
Getting xbase44.tgz ...
Getting xshare44.tgz ...
Getting site44.tgz ...

Location of sets? (disk ftp http or 'done') [disk] done
Start sshd(8) by default? [yes]
Start ntpd(8) by default? [no] yes
NTP server? (hostname or 'default') [default]
Do you expect to run the X Window System? [no]
Change the default console to com0? [no]
Saving configuration files...done.
Generating initial host.random file...done.
What timezone are you in? ('?' for list) [US/Eastern]
Setting local timezone to 'US/Eastern'...done.
Making all device nodes...done.
Installing boot block...
boot: /mnt/boot
proto: /usr/mdec/biosboot
device: /dev/rwd0c
/usr/mdec/biosboot: entry point 0
proto bootblock size 512
/mnt/boot is 3 blocks x 16384 bytes
fs block shift 2; part offset 63; inode block 24, offset 1704
using MBR partition 3: type 166 (0xa6) offset 63 (0x3f)
done.
*****
** The AutumnTECH Generation Four (GEN4) Setup Wizard is Finished **
*****
Setup has completed! Ready to get started? Hit Enter now to reboot
```

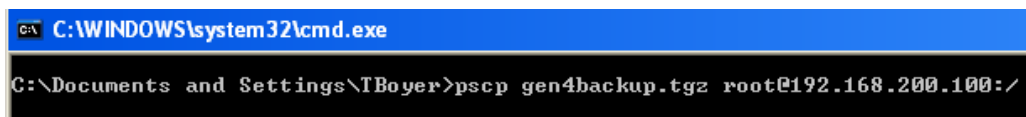
Upgrade Step 3: Recover the Previous Version

Congratulations, you are now operating an AutumnTECH GEN4 system! To recover your previous version settings, you will need to secure file transfer the "gen4backup.tgz" file you created in step 1 to the root of your new GEN4 appliance.

On that Windows® workstation that the gen4backup.tgz was save on, open a command prompt (Start > Run > cmd) If you saved pscp.exe in the C:\Windows\System32 directory, you simply type the following to transfer the file (case sensitive):

```
pscp gen4backup.tgz root@iphere:/
```

**** NOTE **** Change "iphere" in the above command to the actual IP address assigned to the AutumnTECH appliance.

A screenshot of a Windows command prompt window. The title bar is blue and contains the text "C:\WINDOWS\system32\cmd.exe". The command prompt itself is black with white text. The command entered is "C:\Documents and Settings\TBoyer>pscp gen4backup.tgz root@192.168.200.100:/".

```
C:\WINDOWS\system32\cmd.exe
C:\Documents and Settings\TBoyer>pscp gen4backup.tgz root@192.168.200.100:/
```

Once transferred, log into your GEN4 appliance as **root** via SSH or through the monitor and keyboard console and run the following commands (case sensitive):

```
cd /
```

```
tar xvzpf gen4backup.tgz -C /
```

```
tar xvzpf home.tgz -C /
```

```
wget ftp://ftp.autumntech.com/gen4step2.sh -O /gen4step2.sh
```

(note in the above command that -O is a O like in Open)

```
/bin/sh /gen4step2.sh
```

```
reboot
```

That's it! Re-enable your firewall rule and monitor the files /var/log/maillog and /var/log/spamlog for e-mail traffic activity.

To monitor the e-mail traffic files, log into your GEN4 appliance as **root** via SSH, at # prompt, type the following commands (case sensitive):

```
tail -f /var/log/maillog
```

```
tail -f /var/log/spamlog
```

To exit monitoring, simply hit the Ctrl and C together.